

# BELGRAVIA

EX

EX-STOCK

PTO

PAINT TO ORDER  
10  
WORKING DAYS

CMS

COLOUR MATCH SERVICE  
20  
WORKING DAYS

MTO

MADE TO ORDER SANDED  
15  
WORKING DAYS

MTO

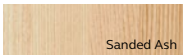
MADE TO ORDER PAINTED  
20  
WORKING DAYS

MTO

COLOUR MATCH SERVICE  
25  
WORKING DAYS



MTO SANDED



Sanded Ash

MTO PAINT TO ORDER

WHITES/CREAMS	BEIGES	BLUES	GREENS	GREYS	PINKS/PURPLES
Brilliant White	Shell	Pantry Blue	Light Teal	Light Grey	Cashmere
Porcelain	Taupe Grey	Airforce	Viridian	Dust Grey	Vintage Pink
Ivory	Mussel	Parisian Blue	Sage Green	Gun Metal Grey	Lavendar Grey
	Stone	Marine	Cardamom	Graphite	Deep Heather
	Stone Grey	Slate Blue	Willow		
	Lava	Indigo	Heritage Green		
			Deep Forest		

CMS Colour Match Service

## DOOR SPECIFICATION

<b>Description</b>	Inframe shaker with internal bead - 5 piece solid frame with flat veneer centre panel
<b>Finish</b>	Ash painted any standard paint colour (or sanded)
<b>Frame material</b>	Ash
<b>Centre panel material</b>	Ash veneer
<b>Door Thickness</b>	20mm
<b>Frame Width</b>	68mm
<b>Edge colour</b>	As face
<b>Reverse colour</b>	As face

## MFC BOARD MATCHES

MFC board options are available for most of our ranges. Please refer to page 13 for further information.

STANDARD DOORSETS

- 1 doorset 570 x 400 (sample door)
- 2 doorset 495 x 600 (for Belfast sink)
- 2 doorset 545 x 600 (for Belfast sink)
- 3 doorset 545 x 800 (for Belfast sink)
- 4 doorset 625 x 600
- 4 doorset 650 x 600
- 4 doorset 770 x 260
- 4 doorset 770 x 270
- 4 doorset 770 x 300
- 4 doorset 770 x 350
- 4 doorset 770 x 400
- 4 doorset 770 x 450
- 4 doorset 770 x 500
- 4 doorset 770 x 600
- 4 doorset 830 x 600
- 5 doorset 280 x 1000
- 6 doorset 950 x 300 with cross rail
- 6 doorset 950 x 400 with cross rail
- 6 doorset 950 x 450 with cross rail
- 6 doorset 950 x 500 with cross rail
- 6 doorset 950 x 600 with cross rail
- 6 doorset 1250 x 300 with cross rail
- 6 doorset 1250 x 400 with cross rail
- 6 doorset 1250 x 500 with cross rail
- 6 doorset 1250 x 600 with cross rail
- 7 glazed doorset 770 x 400
- 7 glazed doorset 770 x 500
- 7 glazed doorset 950 x 500
- 8 single dresser glazed doorset 1210 x 500
- 8 single dresser glazed doorset 1390 x 500
- 9 drawerline set 770 x 300
- 9 drawerline set 770 x 400
- 9 drawerline set 770 x 450
- 9 drawerline set 770 x 500
- 9 drawerline set 770 x 600
- 10 2 pan drawerline set 770 x 500
- 10 2 pan drawerline set 770 x 600
- 10 2 pan drawerline set 770 x 800
- 10 2 pan drawerline set 770 x 900
- 10 2 pan drawerline set 770 x 1000
- 11 2 pan drawer set 625 x 600
- 11 2 pan drawer set 770 x 500
- 11 2 pan drawer set 770 x 600
- 11 2 pan drawer set 770 x 800
- 11 2 pan drawer set 770 x 900
- 11 2 pan drawer set 770 x 1000
- 12 4 drawer pack 770 x 400
- 12 4 drawer pack 770 x 450
- 12 4 drawer pack 770 x 500
- 12 4 drawer pack 770 x 600
- 13 2 pan 3 drawerline set 770 x 1000
- 14 double doorset - 2 aperture 770 x 800
- 14 double doorset - 2 aperture 770 x 900
- 14 double doorset - 2 aperture 770 x 1000
- 15 drawerline set 770 x 800
- 15 drawerline set 770 x 900
- 15 drawerline set 770 x 1000
- 16 dresser double glazed doorset 1210 x 1000
- 17 appliance doorset 625 x 596
- 17 appliance doorset 768 x 146 (slab)
- 17 appliance doorset 768 x 296
- 17 appliance door et 768 x 446
- 17 appliance doorset 768 x 496
- 17 appliance doorset 768 x 596
- 18 appliance drawerline set 768 x 596

STANDARD DOORSETS



STANDARD DOOR

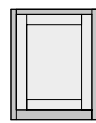


PLAIN FRAME  
includes clear glass



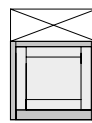
QUADRANT DOOR

SPECIAL SIZES ARE AVAILABLE MADE TO ORDER, PLEASE SEE (h) & (w) LIMITATIONS PROVIDED WHERE APPLICABLE. GLASS IS NOT SUPPLIED WITH SPECIAL SIZE FRAMES.

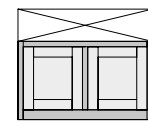


1

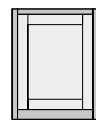
Fixed frame sample door



2



3



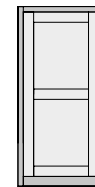
4

SPECIAL SIZES  
min (h) 260  
max (h) 949  
min (w) 260  
max (w) 700



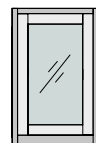
5

SPECIAL SIZES  
min (h) 260  
max (h) 360  
min (w) 260  
max (w) 1250



6

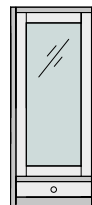
SPECIAL SIZES  
min (h) 950  
max (h) 1899  
min (w) 260  
max (w) 700



7

SPECIAL SIZES  
min (h) 360  
max (h) 1400  
min (w) 300  
max (w) 600

includes clear glass



8

SPECIAL SIZES  
min (h) 770  
max (h) 1600  
min (w) 300  
max (w) 600

includes clear glass



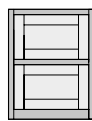
9

SPECIAL SIZES  
min (h) 500  
max (h) 1000  
min (w) 260  
max (w) 700



10

SPECIAL SIZES  
min (h) 770  
max (h) 1000  
min (w) 260  
max (w) 1200



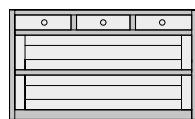
11

SPECIAL SIZES  
min (h) 500  
max (h) 1000  
min (w) 260  
max (w) 1200



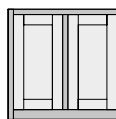
12

SPECIAL SIZES  
min (h) 650  
max (h) 1000  
min (w) 260  
max (w) 1200



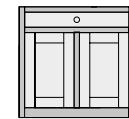
13

SPECIAL SIZES  
min (h) 770  
max (h) 1000  
min (w) 800  
max (w) 1200



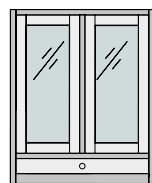
14

SPECIAL SIZES  
min (h) 260  
max (h) 949  
min (w) 600  
max (w) 1200



15

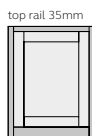
SPECIAL SIZES  
min (h) 500  
max (h) 1000  
min (w) 600  
max (w) 1200



16

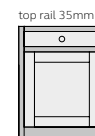
SPECIAL SIZES  
min (h) 770  
max (h) 1600  
min (w) 600  
max (w) 1200

includes clear glass



17

top rail 35mm  
SPECIAL SIZES  
min (h) 260  
max (h) 947  
min (w) 260  
max (w) 700



18

SPECIAL SIZES  
min (h) 500  
max (h) 1000  
min (w) 260  
max (w) 700

## STANDARD DOORSETS

- 19 appliance doorset 948 x 596 with cross rail
- 19 appliance doorset 1008 x 596 with cross rail
- 19 appliance doorset 1248 x 296 with cross rail
- 19 appliance doorset 1248 x 496 with cross rail
- 19 appliance doorset 1248 x 596 with cross rail
- 19 appliance housing set 1428 x 596 with cross rail
- 20 appliance doorset 2018 x 296 with 2 cross rails
- 20 appliance doorset 2018 x 396 with 2 cross rails
- 20 appliance doorset 2018 x 496 with 2 cross rails
- 20 appliance doorset 2018 x 596 with 2 cross rails
- 21 appliance drawer / filler 178 x 596
- 22 drawer / filler / trimmable 170 x 600
- 23 corner base unit doorset 770 x 340 x 340
- 24 corner wall unit doorset 770 x 300 x 300
- 25 quadrant doorset 770 x 320 x 320
- 26 quadrant doorset & chopping board 770 x 420 x 420
- 27 dresser 4 doorset 1210 x 1000 (no bottom rail)
- 28 top box double doorset 315 x 920

## MADE TO ORDER DOORSETS

- 29 single doorset half glazed 950 x 400
- 29 single doorset half glazed 950 x 450
- 29 single doorset half glazed 950 x 500
- 29 single doorset half glazed 950 x 550
- 29 single doorset half glazed 950 x 600
- 30 glazed top box doorset 360 x 400
- 30 glazed top box doorset 360 x 500
- 30 glazed top box doorset 360 x 600
- 31 glazed top box double doorset 360 x 1000
- 32 4 drawer pack 770 x 300
- 33 appliance 2 pan drawer set 625 x 596 (fixed)
- 34 dresser glazed double doorset 1210 x 800 with cross rail
- 34 dresser glazed double doorset 1210 x 900 with cross rail
- 34 dresser glazed double doorset 1210 x 1000 with cross rail
- 35 dresser double doorset - 1 aperture 1210 x 800 with cross rail
- 35 dresser double doorset - 1 aperture 1210 x 900 with cross rail
- 35 dresser double doorset - 1 aperture 1210 x 1000 with cross rail
- 36 single doorset - 1 aperture 1900 x 600 with 2 cross rails
- 37 double doorset - 1 aperture 1900 x 1200 with 2 cross rails
- 38 quadrant double doorset 770 x 580 x 580
- 39 quadrant doorset 950 x 320 x 320 with cross rail
- 40 corner wall unit doorset 950 x 300 x 300 with cross rail

## STANDARD DOORSETS

EX PTO CMS MTO

**SPECIAL SIZES ARE AVAILABLE MADE TO ORDER, PLEASE SEE (h) & (w) LIMITATIONS PROVIDED WHERE APPLICABLE. GLASS IS NOT SUPPLIED WITH SPECIAL SIZE FRAMES.**

**19** top rail 35mm  
**SPECIAL SIZES**  
 min (h) 948  
 max (h) 1899  
 min (w) 260  
 max (w) 700

**20** top rail 35mm  
**SPECIAL SIZES**  
 min (h) 1900  
 max (h) 2300  
 min (w) 260  
 max (w) 700

**21** top & bottom rail 35mm  
**SPECIAL SIZES**  
 min (h) 140  
 max (h) 260  
 min (w) 260  
 max (w) 1200

**22**

**23** **SPECIAL SIZES**  
 min (h) 500  
 max (h) 770  
 min (w) 300  
 max (w) 700

**24** **SPECIAL SIZES**  
 min (h) 500  
 max (h) 950  
 min (w) 300  
 max (w) 700

**25** **SPECIAL SIZES**  
 min (h) 500  
 max (h) 950  
 min (w) N/A  
 max (w) N/A

**26** **SPECIAL SIZES**  
 min (h) 770  
 max (h) 420  
 min (w) N/A  
 max (w) N/A

**27** **SPECIAL SIZES**  
 min (h) 1000  
 max (h) 1600  
 min (w) 900  
 max (w) 1600

**28** Bottom rail 37mm

## MADE TO ORDER DOORSETS

MTO

**SPECIAL SIZES ARE AVAILABLE MADE TO ORDER, PLEASE SEE (h) & (w) LIMITATIONS PROVIDED WHERE APPLICABLE. GLASS IS NOT SUPPLIED WITH SPECIAL SIZE FRAMES.**

**29** includes clear glass  
**SPECIAL SIZES**  
 min (h) 950  
 max (h) 1899  
 min (w) 300  
 max (w) 600

**30** Includes clear glass bottom rail 37mm  
**SPECIAL SIZES**  
 min (h) 300  
 max (h) 500  
 min (w) 300  
 max (w) 600

**31** includes clear glass bottom rail 37mm  
**SPECIAL SIZES**  
 min (h) 300  
 max (h) 500  
 min (w) 600  
 max (w) 1200

**32** **SPECIAL SIZES**  
 min (h) 650  
 max (h) 1000  
 min (w) 260  
 max (w) 1200

**33** semi-dishwasher

**34** includes clear glass  
**SPECIAL SIZES**  
 min (h) 770  
 max (h) 1899  
 min (w) 600  
 max (w) 1200

**35** **SPECIAL SIZES**  
 min (h) 770  
 max (h) 1900  
 min (w) 600  
 max (w) 1200

**36** **SPECIAL SIZES**  
 min (h) 1900  
 max (h) 2300  
 min (w) 260  
 max (w) 700

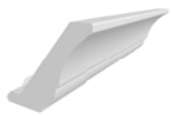
**37** **SPECIAL SIZES**  
 min (h) 1900  
 max (h) 2300  
 min (w) 600  
 max (w) 1200

**38** includes filler for 570 carcass available in one size only

**39** available in one size only

**40** available in one size only

STANDARD ACCESSORIES



CORNICE  
90 X 3000 X 106



UNDER CORNICE  
50 X 3000 X 68



QUADRANT CORNICE  
90 X 350 X 350



QUADRANT UNDER CORNICE  
50 X 350 X 350



QUADRANT END CORNICE BLOCK  
90 X 38 X 38



QUADRANT END UNDER CORNICE BLOCK  
50 X 48 X 48



PLINTH  
150 X 3040 X 18



QUADRANT PLINTH  
150 X 506 X 366



MOULDED SKIRTING PLINTH  
135 X 3050 X 20



QUADRANT MOULDED SKIRTING PLINTH  
135 X 391 X 391



QUADRANT MOULDED SKIRTING PLINTH  
135 X 420 X 420  
for quadrant barrel doorset



QUADRANT PLINTH 335MM  
135 X 335 X 335  
for quadrant barrel doorset



QUADRANT END MOULDING  
3050 X 70 X 50



MOULDED PILASTER BASE  
135 X 64 X 64



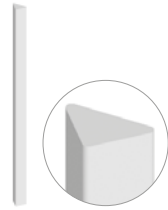
INTERNAL CORNER POST  
950 X 70 X 20 (2NO.)



TALL FEATURE END POST **NEW**  
3000 X 50 X 75



MODULAR PILASTER  
900 X 75 X 75  
2400 X 75 X 75 available in  
Sanded & PTO only



MODULAR PILASTER BEAD  
910 X 20 X 20



CHOPPING BOARD & TRAY SET  
770 X 200 X 440  
carcass not included



PLAIN END PANEL  
900 X 650/1200 X 19  
910 X 2430 X 19  
960 X 360 X 19  
2450 X 650 X 19



T&G END PANEL  
900 X 650/1200 X 19\*  
910 X 2430 X 19\*  
960 X 360 X 19\*  
2430 X 650 X 19\*



FRAMED END PANEL  
770 X 325 X 20  
950 X 325 X 20  
1210 X 325 X 20  
1390 X 325 X 20



FRAMED END PANEL  
with cross rail  
2120 X 595 X 20  
2300 X 595 X 20



CANOPY 1200  
575 X 1200 X 165  
trimmable to 1000



TRADITIONAL CORBALS  
166 X 90 X 125 (2NO.)



FRAME PROFILE 37MM  
37 X 1500 X 20



FRAME PROFILE 68MM  
68 X 1500 X 20

MADE TO ORDER ACCESSORIES



QUADRANT MOULDED PLINTH  
135 X 580 X 580  
for quadrant double doorset



QUADRANT PLINTH 523MM  
135 X 523 X 523  
for quadrant double doorset



OVERMANTLE  
1150 X 450 X WIDTH  
MIN (W): 1400  
MAX (W): 1900



CANOPY 1400  
575 X 1400 X 150  
trimmable to 1200



ROUNDED MANTLE SHELF  
140 X 1000-2500 X 140



MITRED MANTLE SHELF  
111 X 1000-2500 X 200



MEDIUM MANTLE CORBAL  
500 X 450 X 120



X-BOX WINE RACK UNIT  
770 X 600 X 520  
Unit / Frame / Drawer Front



SPICE DRAWER SET  
770 X 200 X 440  
carcass not included



FRAMED END PANEL  
870 X 595-900 X 21



FRAMED END PANEL  
WITH VERTICAL CENTRE RAIL  
870 X 901-1200 X 21

\* The T&G grooving and the timber grain run up and down the panel height.